



MONTHLY MEMBERSHIP PROGRESS REPORT

District 5M 13

Results as of: 1/31/2015

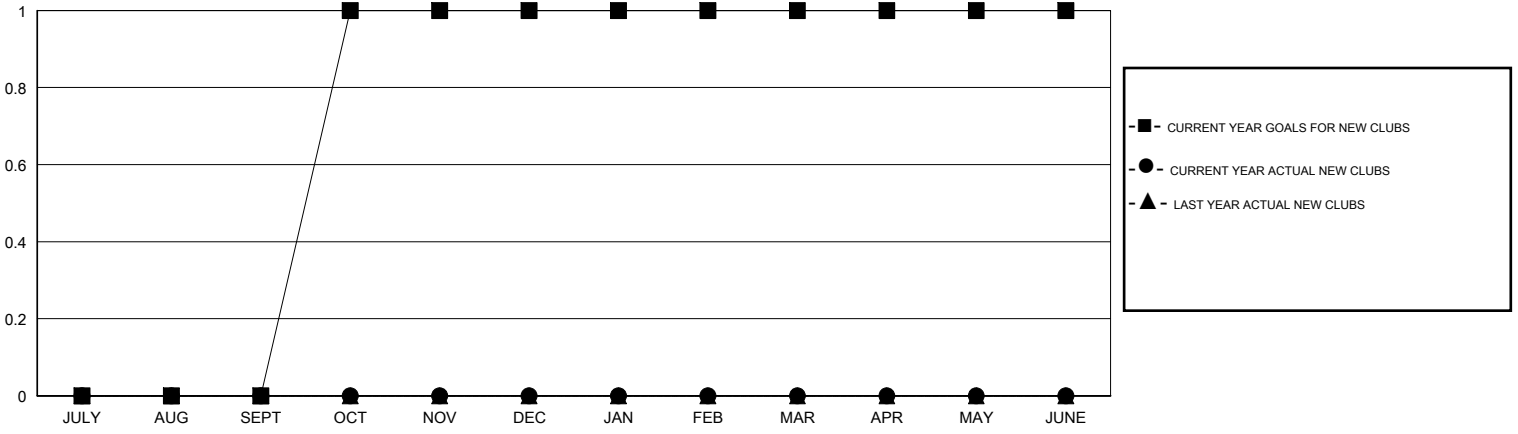
GMT: DENNIS STEVENSON

LOCATION MANITOBA

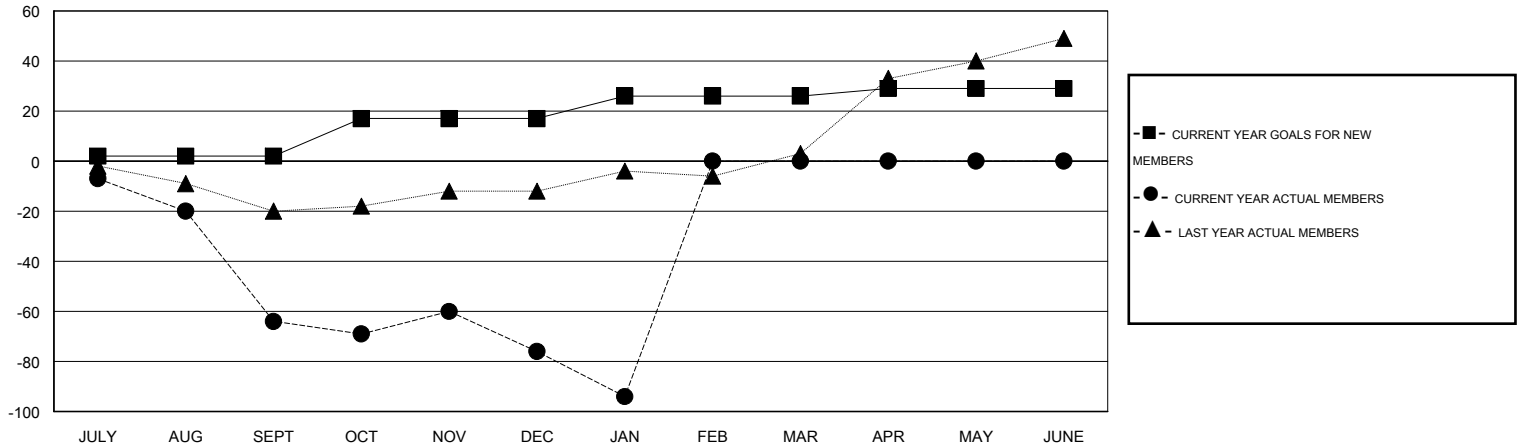
GMT CA 2

Clubs					Members				
RESULTS FOR 2014-2015					RESULTS FOR 2014-2015				
QUARTER	NEW CLUB GOAL	NEW CLUBS	DROPPED CLUBS	NET GAIN/LOSS	QUARTER	NEW MEMBER GOAL	CHARTER AND NEW MEMBERS ADDED	DROPPED MEMBERS	NET GAIN/LOSS
JULY/AUG/SEPT	0	0	2	-2	JULY/AUG/SEPT	2	3	67	-64
OCT/NOV/DEC	1	0	1	-1	OCT/NOV/DEC	15	24	36	-12
JAN/FEB/MAR	0	0	2	-2	JAN/FEB/MAR	9	6	24	-18
APR/MAY/JUNE	0	0	0	0	APR/MAY/JUNE	3	0	0	0

GOALS AND ACTUAL NEW CLUBS CUMULATIVE



GOALS AND ACTUAL MEMBERS CUMULATIVE



DROPPED CLUBS: 5	14 CLUBS OF 61 ADDED 1 OR MORE NEW MEMBERS	GENDER DISTRIBUTION MALE 927 (77.19%) FEMALE 274 (22.81%)
DROPPED MEMBERS DECEASED 9 CLUB CANCELLED 22 OTHER 96 TOTAL 127	CLICK HERE FOR HEALTH ASSESSMENT DATA	FAMILY UNIT MEMBERS 193 HEAD OF HOUSEHOLD 96 NON-HEAD OF HOUSEHOLD 97